

Cottage Style Bookshelf

By **Jaime Costiglio**

Difficulty

Moderate

A classic cottage style bookshelf complete with tongue and groove backing. I designed this simple bookshelf with clean, easy lines and a nod to the cottage aesthetic. It's plenty deep shelf space at over 12 inches can hold almost any size book. Tons of storage and two adjustable shelves.





Tools

Kreg Tools

- [Accu-Cut™](#)
- [Kreg® Pocket-Hole Jig 720](#)
- [Shelf Pin Jig with 1/4" Bit](#)

Other Tools

- Circular Saw (cordless)
- Miter Saw
- Table Saw
- Tape Measure
- Drill (cordless)
- Sander

Materials

Wood Products

- 1 Plywood , 3/4" Thick , Full Sheet
- 1 Plywood , 3/4" Thick , Half Sheet
- 4 Board , 2x2 , 72"
- 1 Board , 1x2 , 96"
- 2 Board , 1x3 , 72"
- 6 Tongue & Groove , 1x6 , 96"

Hardware & Supplies

- 50 1 1/4" Pocket Hole Screws
- 4 2" Wood Screws
- 24 1 1/4" Wood Screws

Cut List & Parts

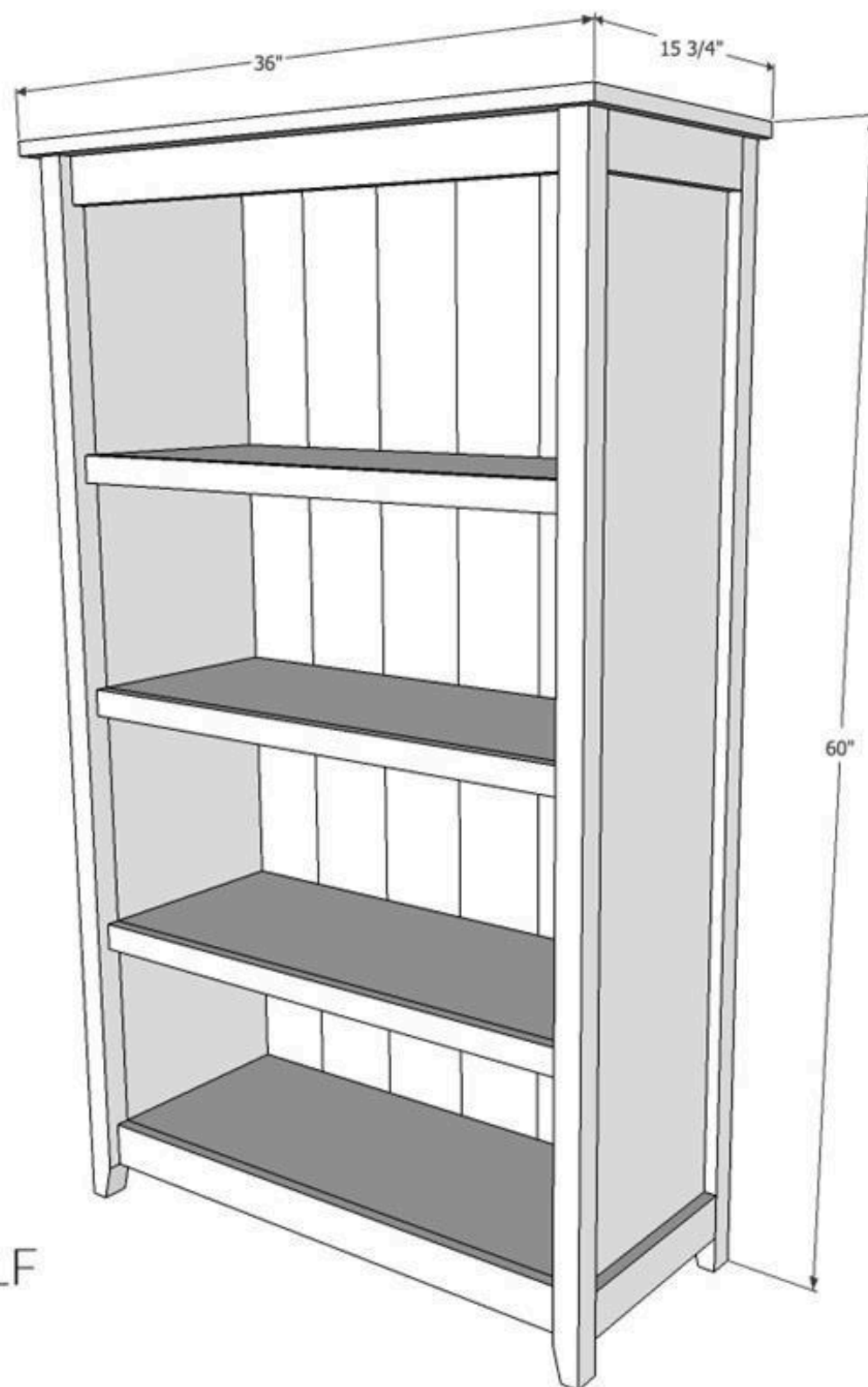
- 4 Legs , 2 X 2 @ 59 1/4"
- 4 Side Trim , 1 X 3 @ 12"
- 2 Side Panels , 3/4" X 12 X 56 1/2"
- 2 Shelves , 3/4" X 12 X 31 1/2"
- 1 Top (Carcass) , 3/4" X 12 X 33"
- 2 Shelf Trim , 1 X 3 @ 31 1/2"
- 1 Shelf Trim , 1 X 3 @ 31 1/2"
- 2 Shelves (Movable) , 3/4" X 12 X 31 1/4"
- 2 Shelf Trim (Movable) , 1 X 2 @ 31 1/4"
- 1 Top , 3/4" X 15 3/4" X 36"
- 6 Backing (Tongue & Groove) , 1 X 6 @ 57 1/4"

Directions

1

Dimensions

Overall dimensions: 60"h x 36"w x 15 3/4"d



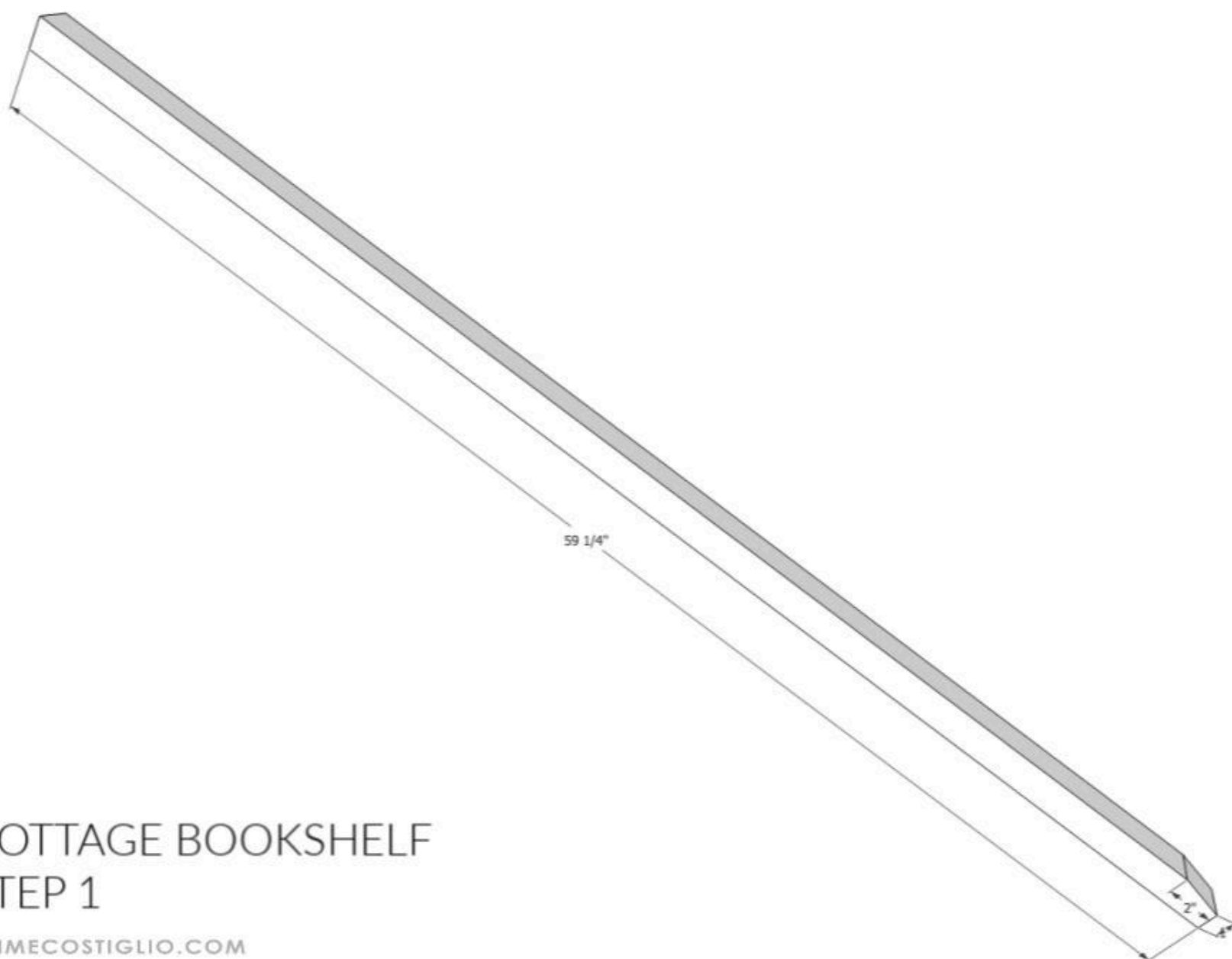
COTTAGE BOOKSHELF
DIMENSIONS

JAIMECOSTIGLIO.COM

2

Step 1

Create the tapered end on each leg using a jigsaw or table saw.

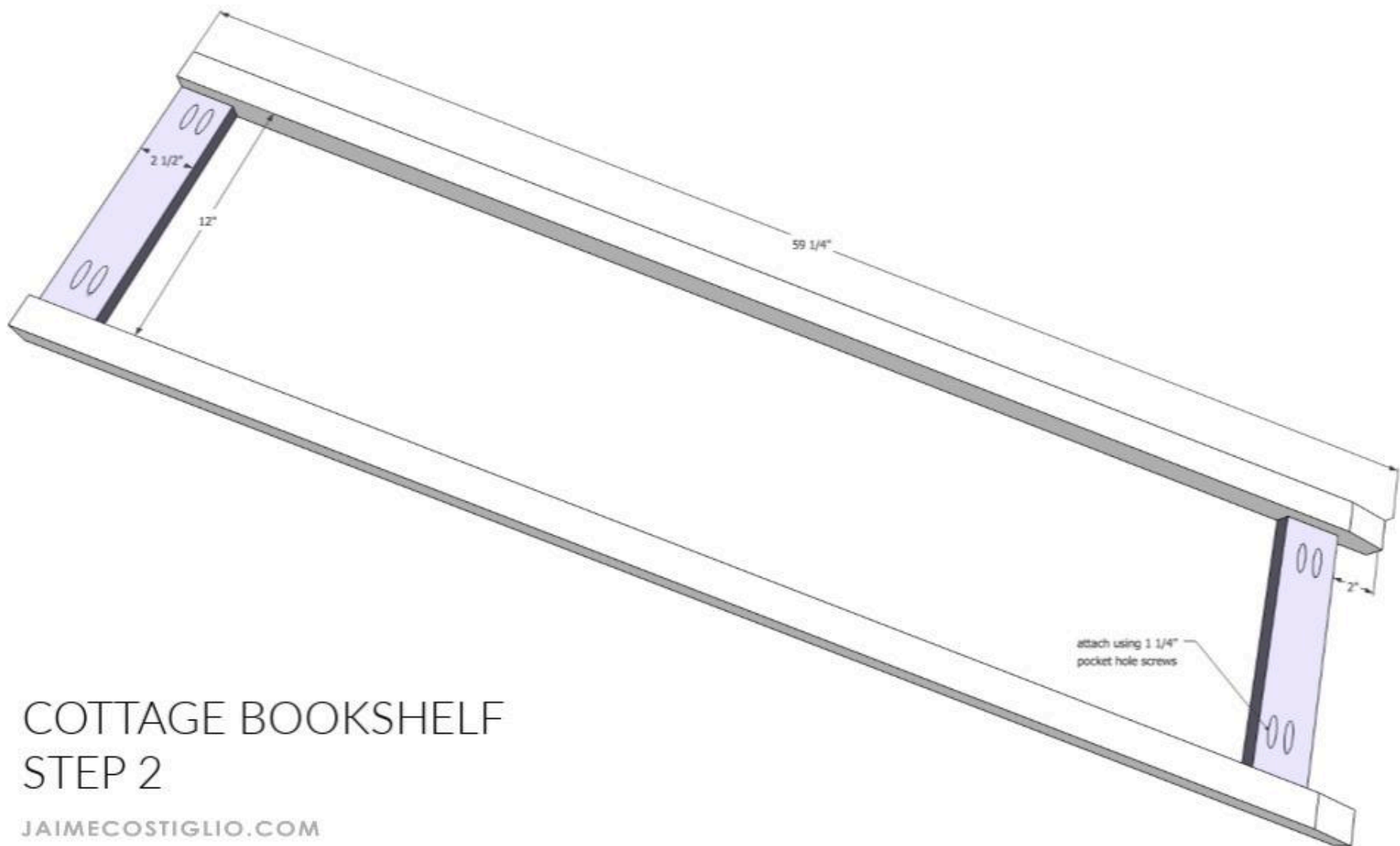


COTTAGE BOOKSHELF
STEP 1

JAIMECOSTIGLIO.COM

3**Step 2**

Attach the side panel cross supports using pocket holes and 1 1/4" pocket hole screws. Make 2.

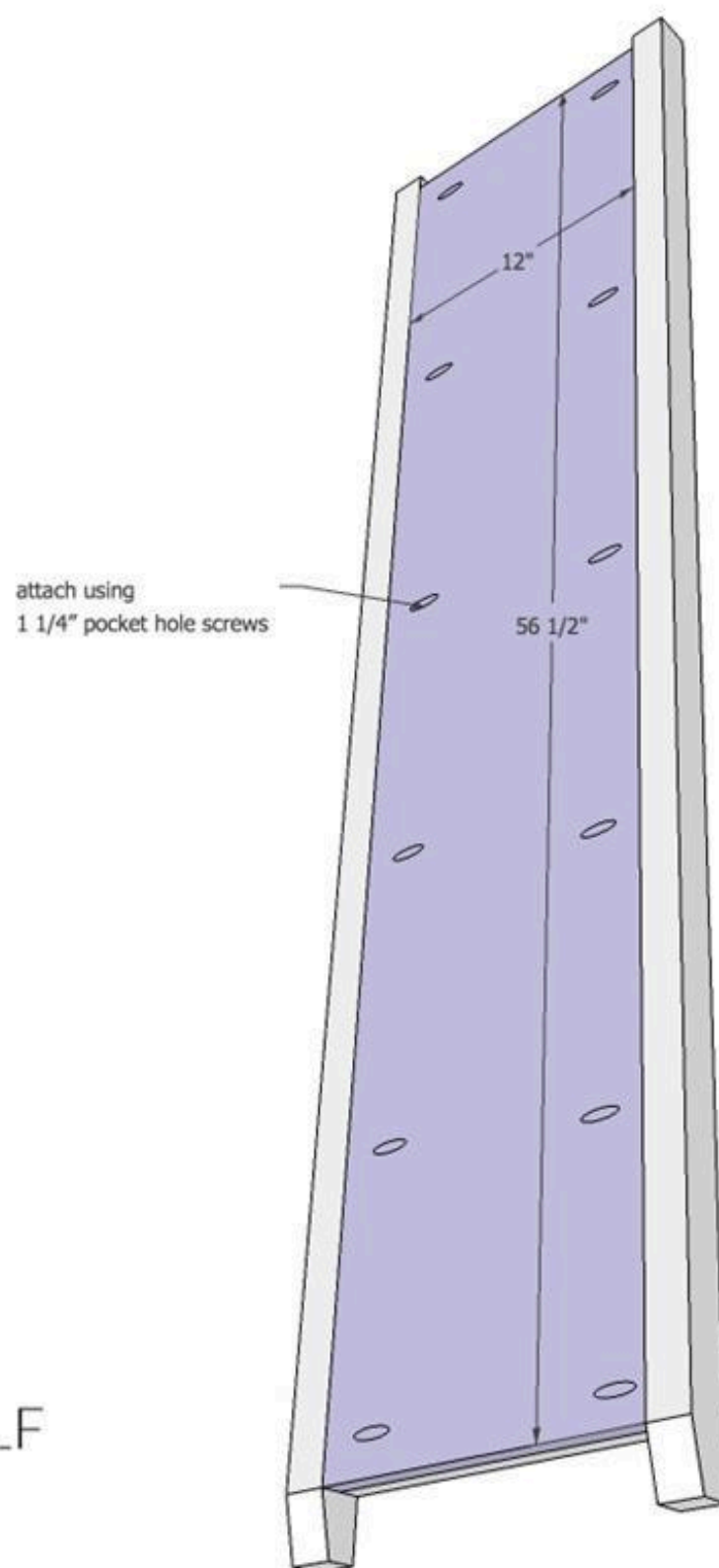


COTTAGE BOOKSHELF STEP 2

JAIMECOSTIGLIO.COM

4**Step 3**

Attach the side panel into the frame using 1 1/4" pocket hole screws. Make 2.



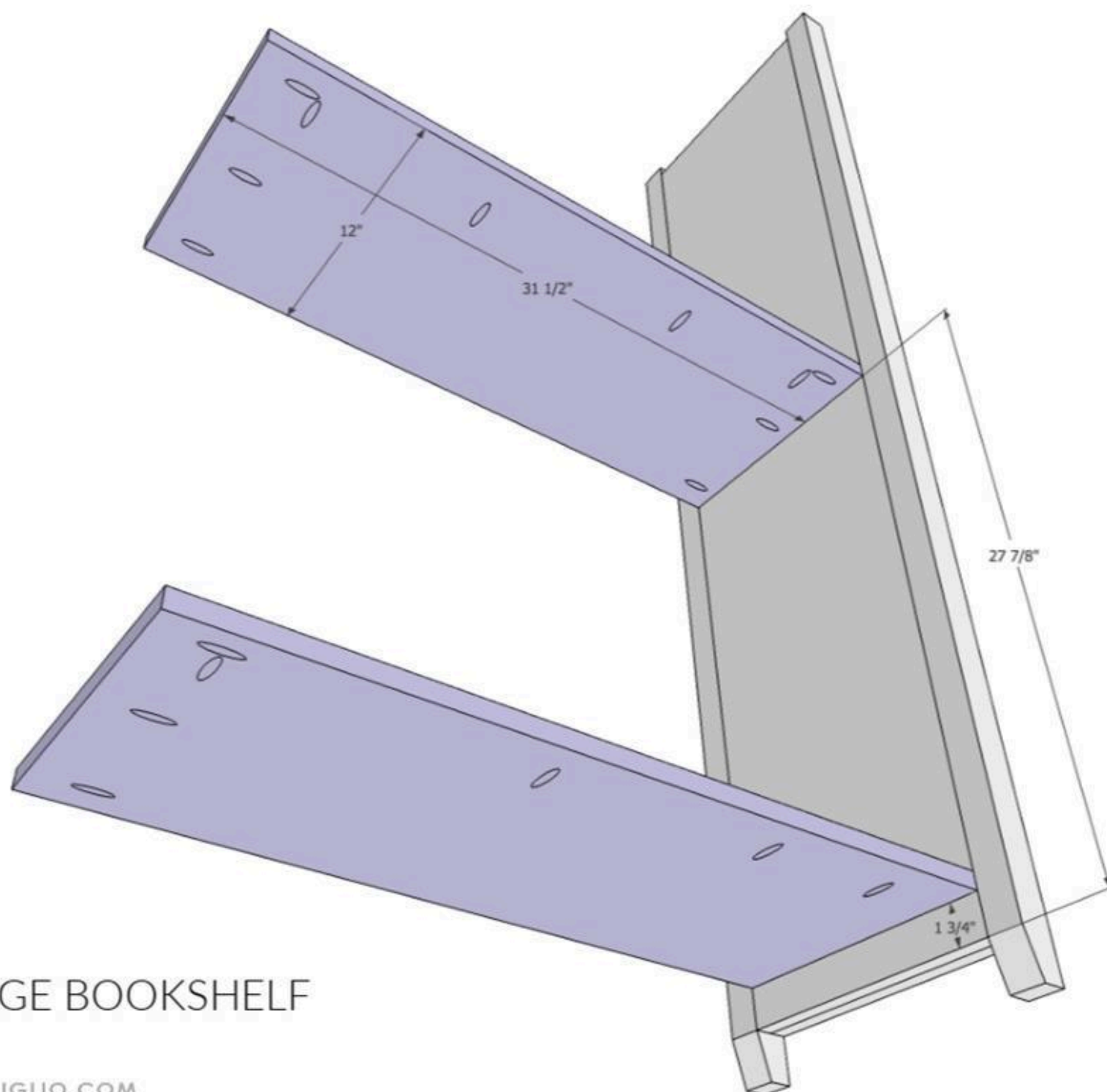
COTTAGE BOOKSHELF
STEP 3

JAIMECOSTIGLIO.COM

5

Step 4

Attach fixed shelves to side panel using 1 1/4" pocket hole screws.



COTTAGE BOOKSHELF
STEP 4

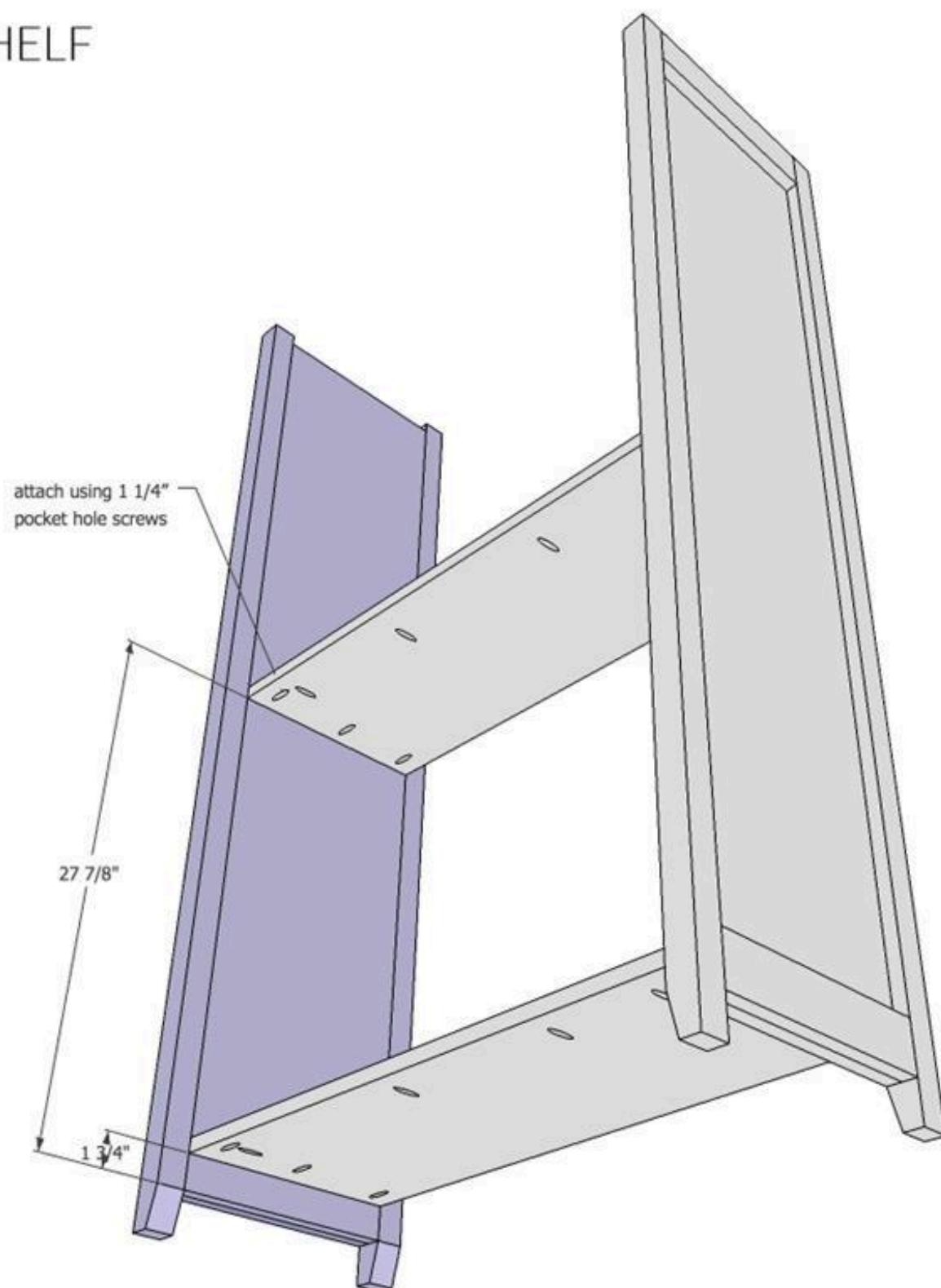
JAIMECOSTIGLIO.COM

6

Step 5

Attach second side panel to other end of fixed shelves using 1 1/4" pocket hole screws.

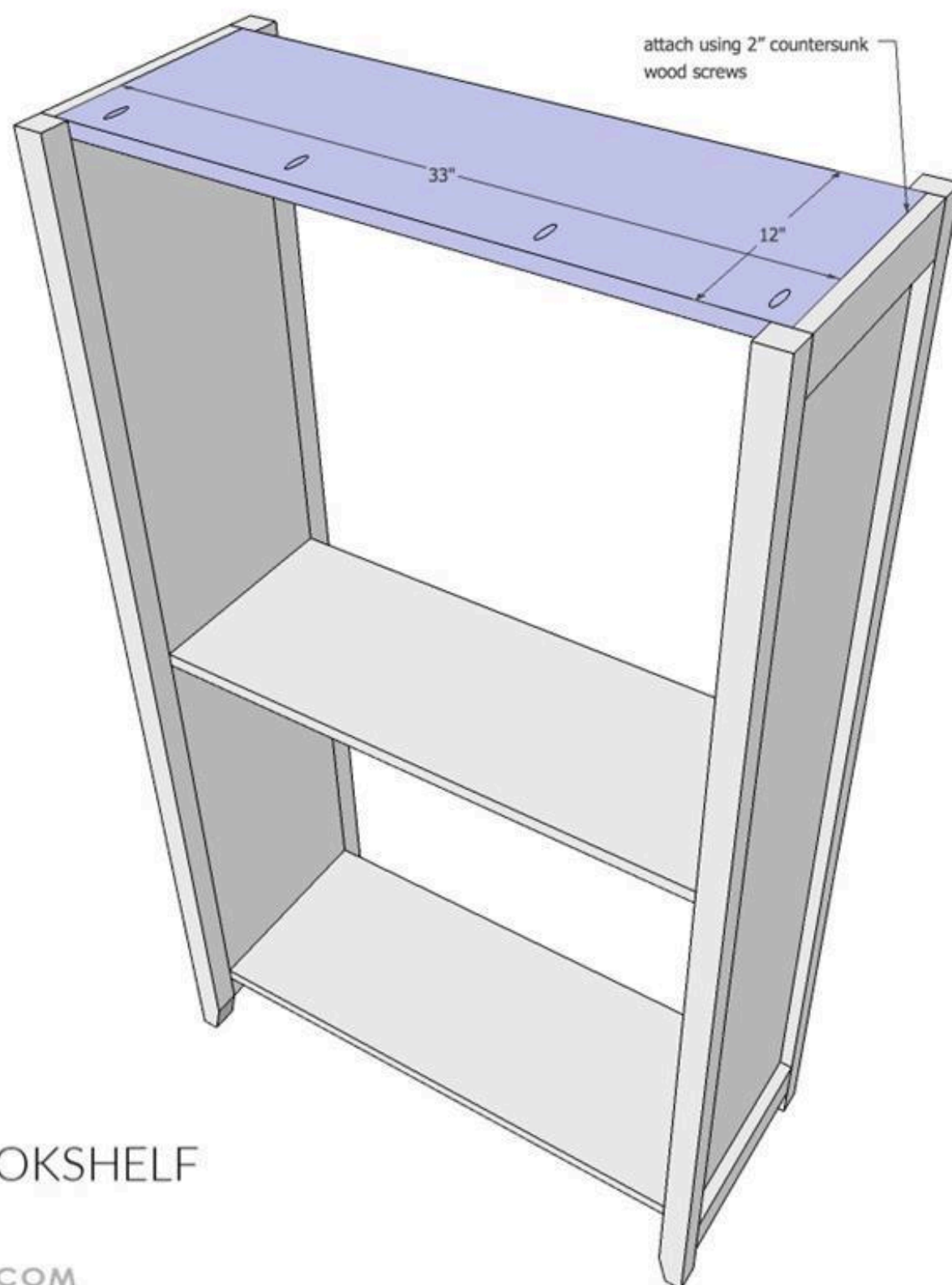
COTTAGE BOOKSHELF STEP 5



JAIMECOSTIGLIO.COM

7**Step 6**

Attach carcass top to side panels using countersunk 2" wood screws.



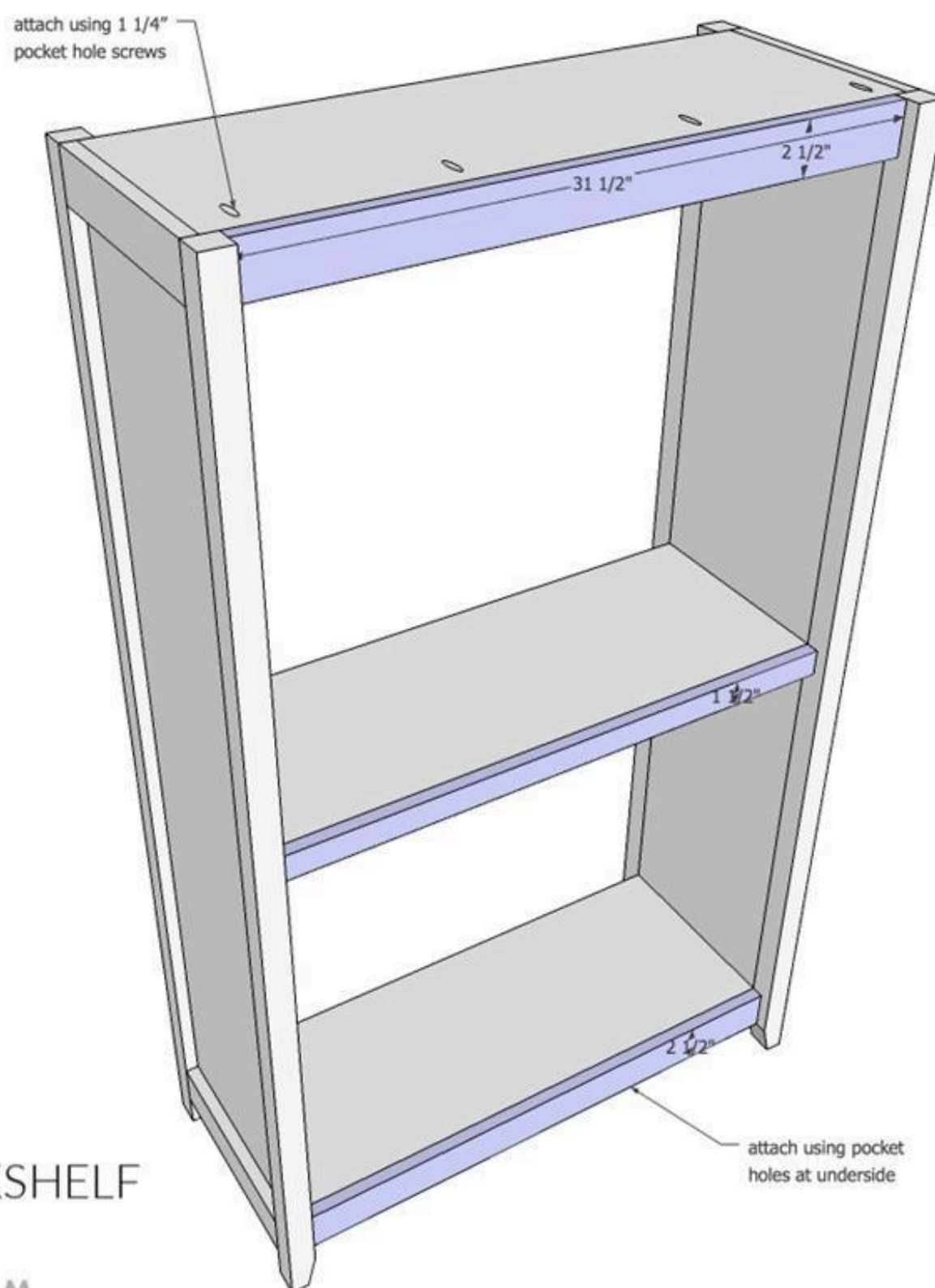
COTTAGE BOOKSHELF
STEP 6

JAIMECOSTIGLIO.COM

8

Step 7

Attach front trim to shelves using 1 1/4" pocket hole screws.

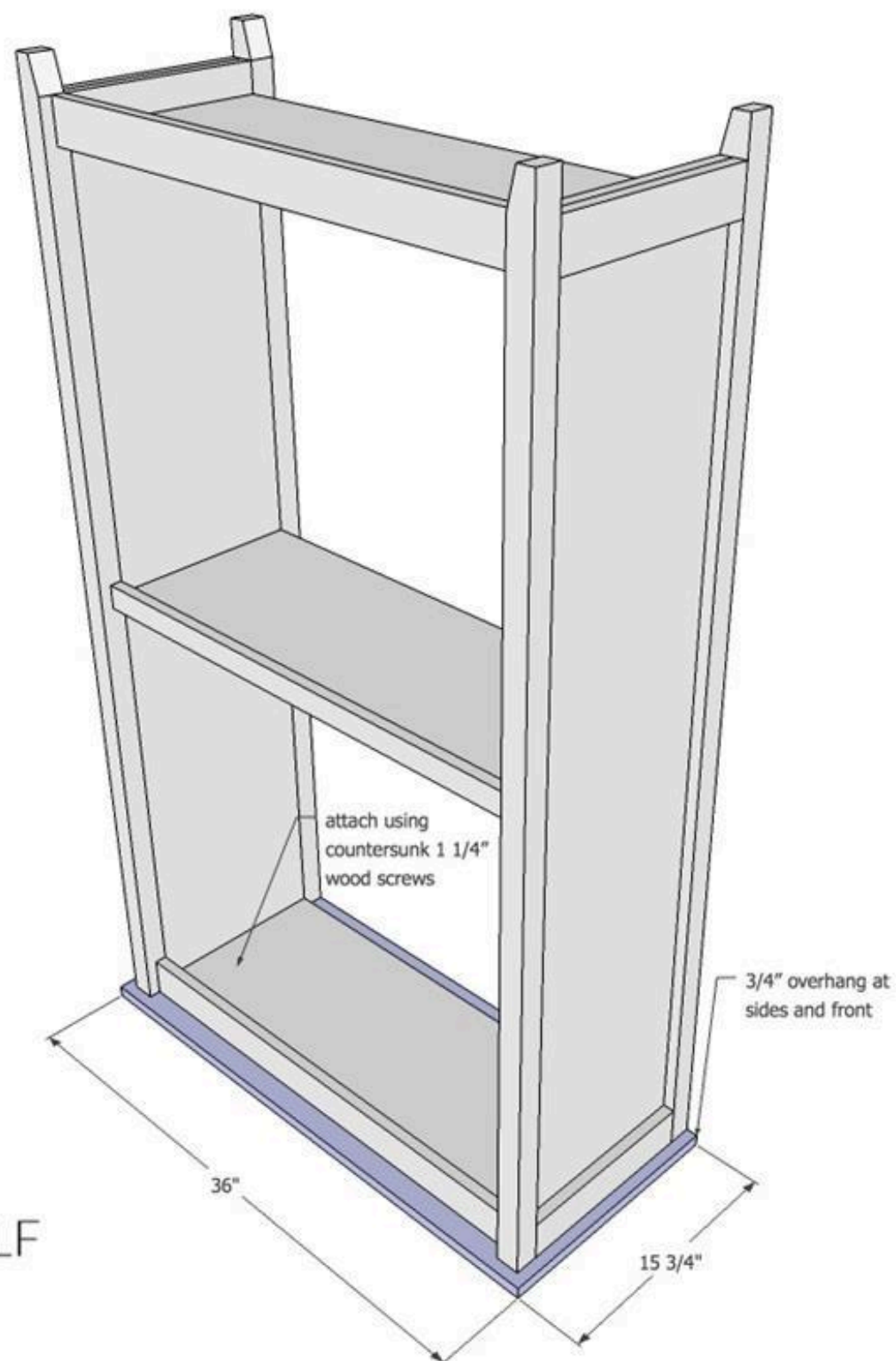


COTTAGE BOOKSHELF
STEP 7
JAIMECOSTIGLIO.COM

9

Step 8

Attach top to carcass using countersunk 1 1/4" wood screws.

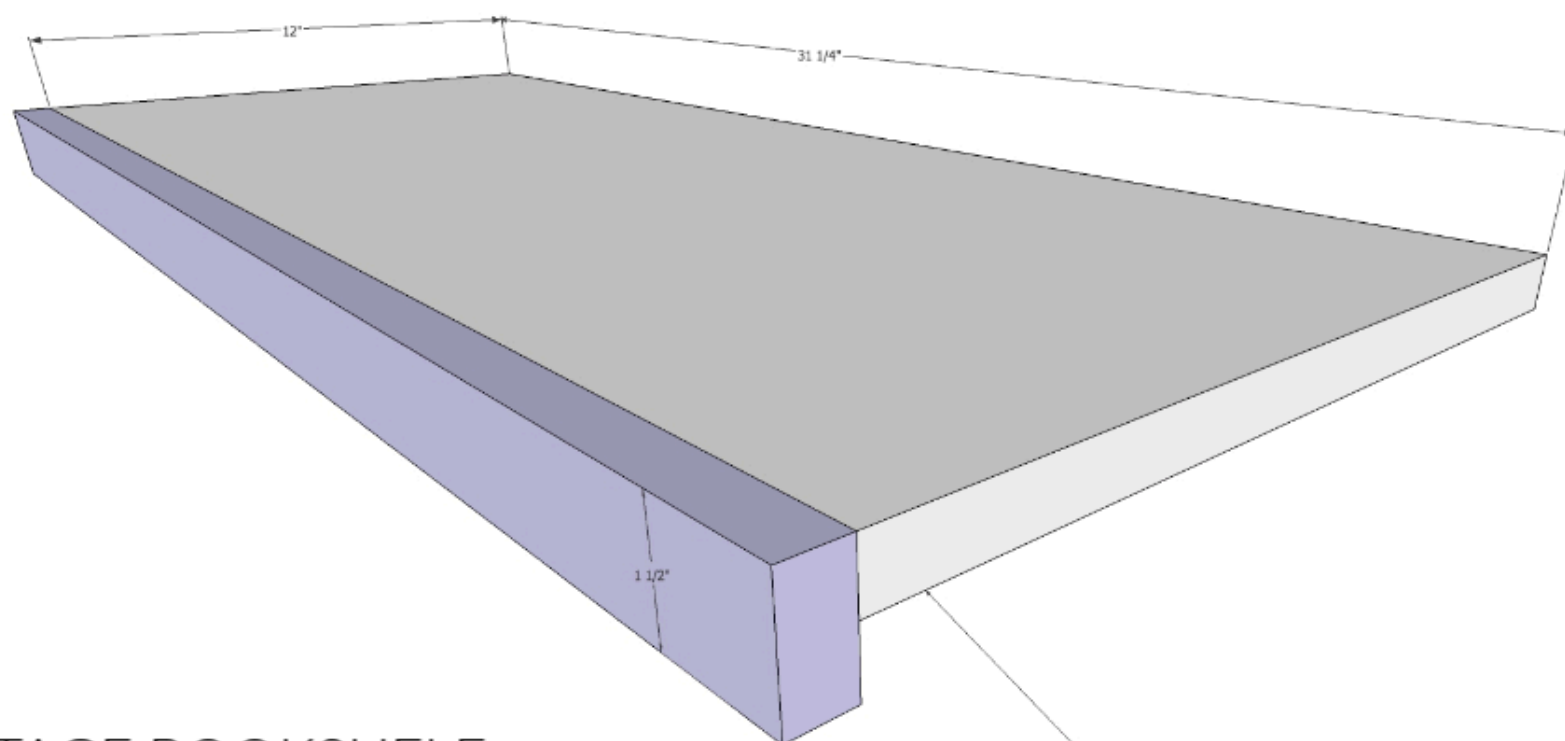


COTTAGE BOOKSHELF
STEP 8

JAIMECOSTIGLIO.COM

10**Step 9**

Make two movable shelves. Attach front trim to shelf using 1 1/4" pocket hole screws.



COTTAGE BOOKSHELF STEP 9

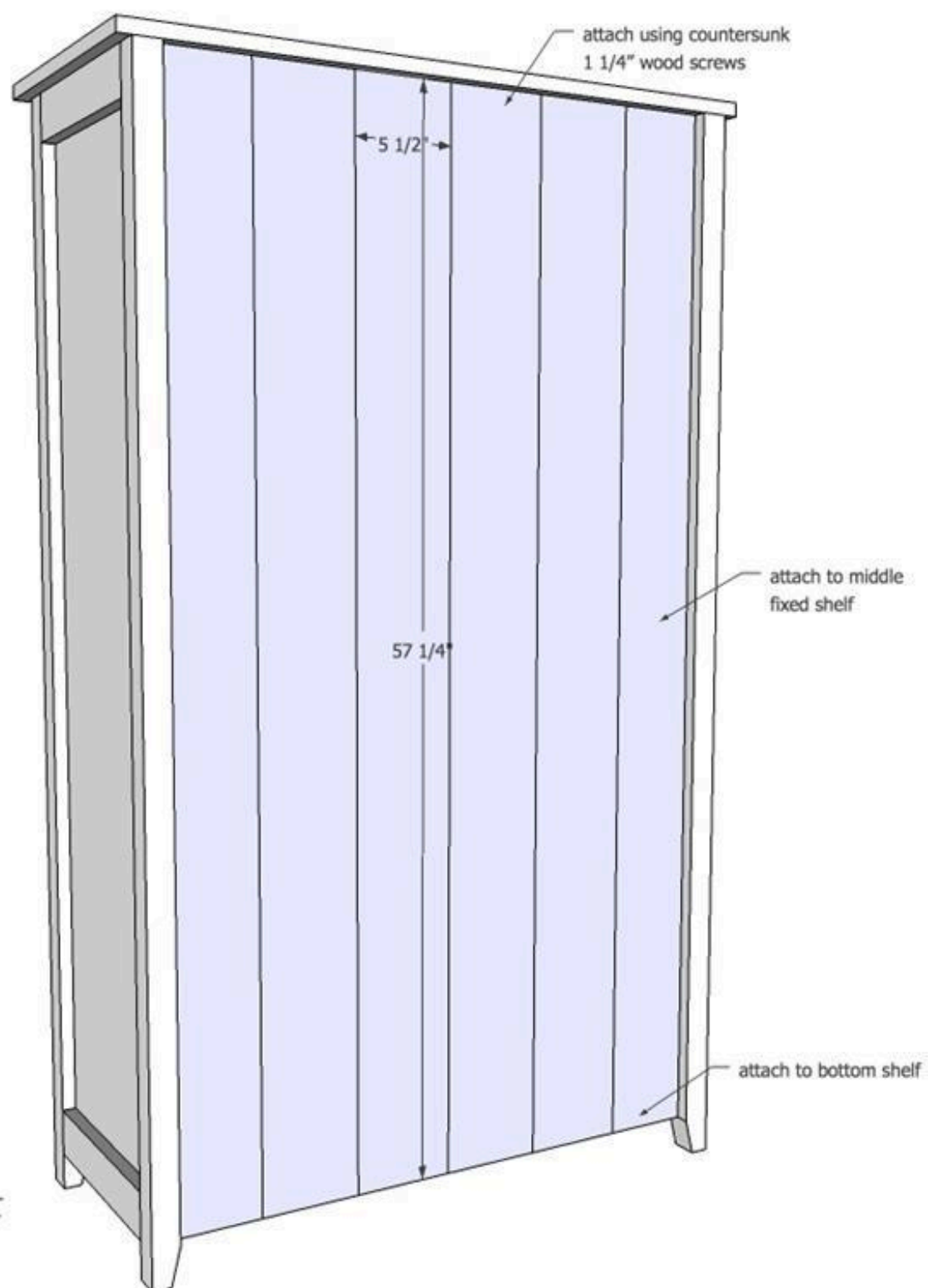
JAIMECOSTIGLIO.COM

attach from underside using 1 1/4"
pocket hole screws

11

Step 10

Attach tongue and groove backing to carcass using countersunk 1 1/4" wood screws.



COTTAGE BOOKSHELF
STEP 10